



## Insulated doors



No draft

No air leakage

Easy

Solid

Two types available

### Insulated doors

In broiler houses the non-turning fans are an annoying source of air leakage and draught. The small openings between the slats of the fans have a bad influence on climate. A good reason though to seal the fans properly.

The insulated doors of Tulderhof will seal hermetically and prevent draft and air leakage.

The doors will fit on most driven V-belts (Munters,

Gigola, Pericoli).

The doors are made of formed steel, with a large layer of isolation. The steel doors can be sealed draughtfree with a key. To keep the door in the open position, a hollow pipe is delivered in the package.

Two types are available:

1. Single insulated door
2. Insulated double doors





## Technical information

### Insulated doors for fans

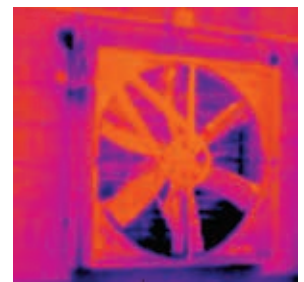
Type of doors for fans	Door 1380	Door 1090	Door 950	Double door
Width - mm	1,380	1,090	950	960 (each door)
Height - mm	1,380	1,090	950	1,380 (each door)
Depth - mm	20	20	20	20 (each door)
Weight - kg	24	16	11	12.5 (each door)

N.B: these standard sizes are always available from stock, other sizes are available on demand.



On your left you see an infrared image of our insulated door for a fan. Result: no cold bridge.

On your right you see a fan without our insulated door, this results clearly in a cold bridge.



### Insulated doors for tunnel air inlets (Winter doors)

The tunnel air inlets often form a cold bridge during the winter. Since the tunnel air inlets are not used during the winter, Tulderhof developed the insulated doors. The insulation provides an easy closure system for every brand or type of air inlet.



#### Advantages

- > no draught
- > 40 mm sandwich insulation
- > no direct sunlight
- > adjustable by 1 person



Type of winter doors	Winter door 1000	Winter door 2000	Winter door 3000
Width - mm	1 100	2 100	3 100
Height - mm	1 160	1 160	1 160
Depth - mm	40	40	40
Weight - kg	28	44	50

N.B: these standard sizes are always available from stock, other sizes are available on demand.