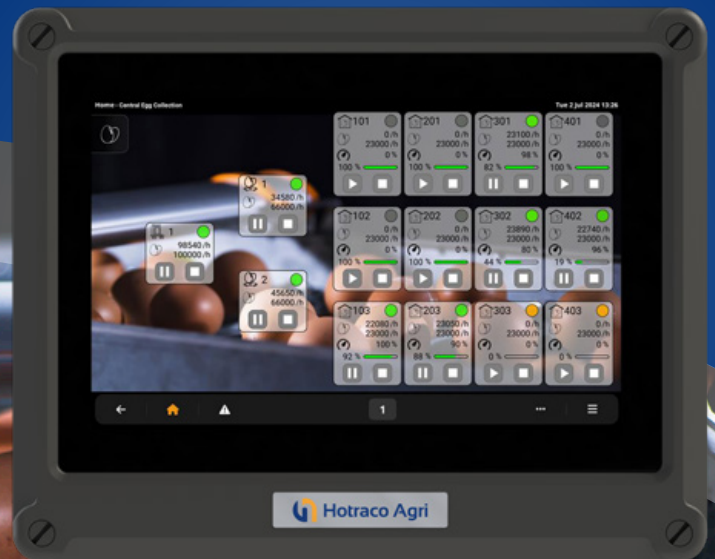


Egg Flow Control

Collect smarter, boost your profit



Steady egg output
with optimal egg mix



Reduce shell damage



Save time and
production costs



Takes the complexity out
of egg collection processing





Perfect Egg Flow Control

From barn-level to Centralized Egg Collection

Welcome to a new era of egg flow management. With Hotraco Agri's innovative solutions, you ensure that every step of your egg collection process is efficient, consistent, and automated as far as possible.

From EggXact egg counters that provide accurate, real-time insights, to our control systems that optimize egg flow across the entire operation – all our products are designed to simplify egg processing, reduce costs, and drive profitability. Whether you need barn-level optimization with the egg collection module for Fortica MAX or Antares Egg controller, or centralized egg collection across multiple barns with Fortica MAX CEC, our solutions deliver unmatched reliability, automation, and control.

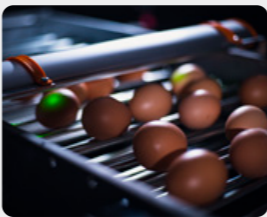
Discover how our solutions reduce labor costs, minimize egg breakage, and enhance productivity. The bottom line? Increased profits and a more satisfied workforce.

-  Steady egg output with optimal egg mix
-  Reduce shell damage
-  Save time and production costs
-  Takes the complexity out of egg collection processing

Product selection guide

A solution for every situation

Egg Flow Control per barn			Egg Flow Control per barn & Centralized Egg Collection		
I have a Fortica controller & one barn	I have a controller of another brand & one barn	I have a new barn	I have Fortica controllers & multiple barns	I have controllers of other brands & multiple barns	I have multiple new barns
EggXact egg counters per belt	EggXact egg counters per belt	EggXact egg counters per belt	EggXact egg counters per belt	EggXact egg counters per belt	EggXact egg counters per belt
Egg collection module	Antares Egg controller	Fortica MAX + egg collection module	Egg collection module per barn	Antares Egg controller per barn	Fortica MAX + egg collection module per barn
			Fortica MAX - CEC	Fortica MAX - CEC	Fortica MAX - CEC



EggXact Egg Counter
An egg counter providing precise egg counting per belt, delivering real-time insights to optimize egg flow and quickly address issues. With 99.5% accuracy, EggXact allows you to monitor egg production per day, hour, and minute.



Antares Egg Controller
An egg flow controller that manages egg belt speeds for smooth, steady output to the processing point, reducing shell damage and minimizing collection time at barn level. The Antares Egg integrates seamlessly with existing systems and supports various egg belts and egg types, ensuring seamless integration with any farm setup.



Egg Collection Module for Fortica MAX
A software module within the Fortica MAX controller that optimizes egg flow at the barn level, ensuring steady, consistent output. The module's predictive capabilities adjust belt speeds automatically, minimizing fluctuations, reducing egg breakage, and maximizing efficiency.



Fortica MAX CEC for Centralized Egg Collection
An egg flow controller for centralized egg collection that synchronizes egg flow across all barns to maintain a steady output to the processing point for the entire farm. The Fortica MAX CEC automatically adjusts egg outputs from each barn to compensate for fluctuations, minimizing downtime, reducing egg breakage, and maximizing packing and processing efficiency.

Egg Flow Control: How it Works

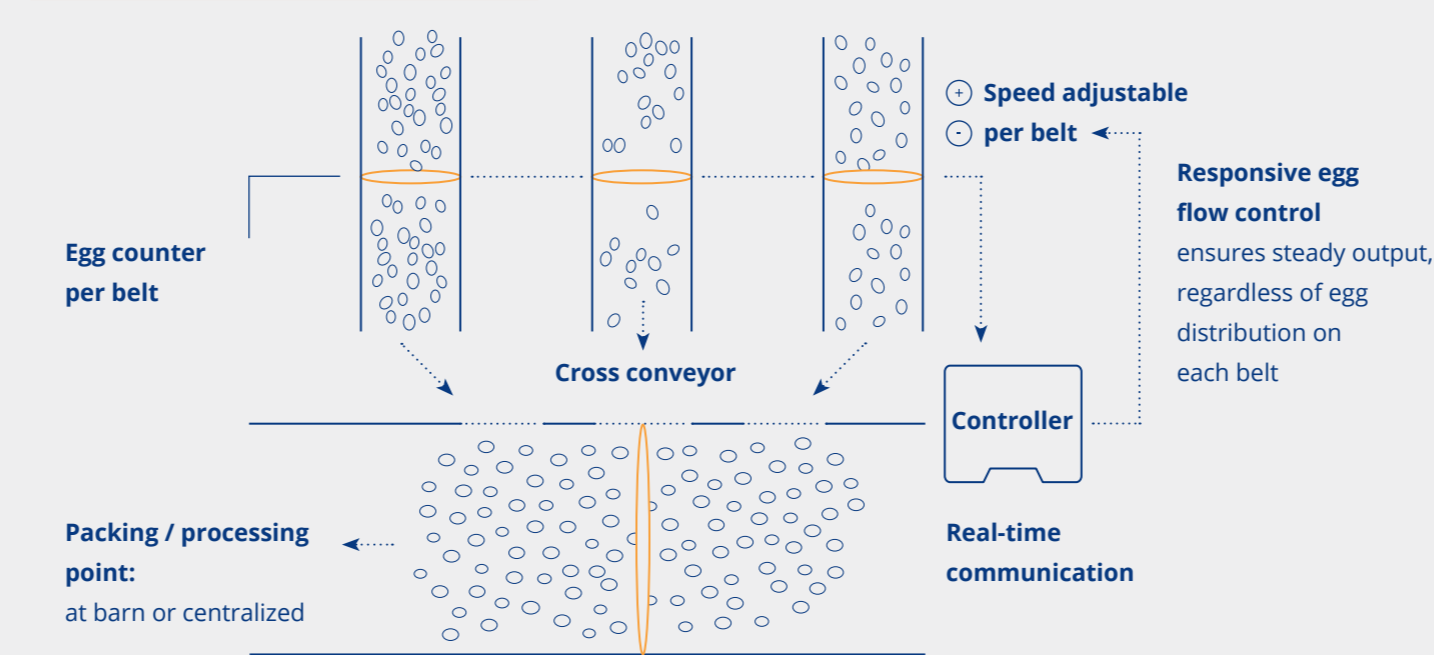
Egg belts synchronize speed for steady egg output

Responsive and predictive egg flow

Egg flow control is an automatic egg counting and communication system, where multiple egg counters (one per belt) communicate in real time with a Fortica MAX or Antares Egg controller. The control system automatically adjusts the belt speeds to ensure a steady egg output to the processing point or centralized egg collection, optimizing packing, grading, and processing. This results in smoother egg flow, reduced shell damage, shorter collection times, lower labor costs and higher job satisfaction.

- ✓ **Save time and costs by reducing collection time and staffing requirements**
- ✓ **Reduce shell damage and egg breakage**
- ✓ **Quickly detect and locate production differences due to diseases and failures**

At barn level



EggXact egg counter

With EggXact egg counters on each belt, egg flow control works best. These smart counters are designed for perfect egg flow control and are compatible with any system and any device, including smartphones.

Thanks to the continuous exchange of information, you get real-time insight into the number of eggs per belt, per day, hour and minute. This allows you to react faster when production results go down due to failures or diseases.

- ✓ **Real-time laying percentages: 99,5% accuracy**
- ✓ **Detect production differences - diseases and failures - more quickly**
- ✓ **Premium, reliable, future-proof hardware**
- ✓ **Suitable for all types of belts, eggs and barns**

Controllers and Modules

Tailored solutions for your egg flow control needs

Looking to optimize egg flow control at the barn level?
We offer solutions for every situation:

- ✓ **Upgrade your Fortica: If you already have a Fortica controller, simply add the egg collection module.**
- ✓ **Integrate with ease: Using a climate controller from another brand? The Antares Egg controller for egg flow is the perfect companion.**
- ✓ **Start fresh: No control system yet? The Fortica MAX with egg collection module offers a complete solution.**

Whichever solution you select, you get the same powerful software for unmatched egg flow control. Every option works seamlessly with any belt, egg type, or barn configuration.

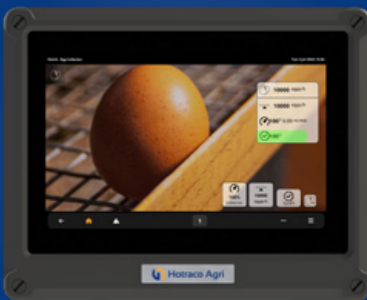
Antares Egg: Built for smooth egg flow

The Antares Egg controller is designed for seamless egg flow management and integrates with any existing control system on your farm. It synchronizes egg belt speeds for smooth, steady output - minimizing shell damage, collection time, and labor costs. With its 7-inch touchscreen, Antares Egg makes monitoring and control intuitive by showing only the most important information.



Fortica MAX: Complete control with egg collection module

Fortica MAX puts ultimate control at your fingertips. With its responsive and predictive capabilities, the egg collection module ensures steady, consistent, and adjustable egg flow. This optimizes your collection, grading, and packing processes, leading to increased profits. And that's just a glimpse of what Fortica can do. This all-in-one control system also allows you to monitor, control, and automate all other layer house processes, including climate, feeding, watering, lighting, and animal weighing.



Egg Flow Control at Farm Level

Fortica MAX CEC: Centralized Egg Collection

A no-brainer for centralized collection

Think egg flow control at the barn level is impressive? Imagine controlling the egg flow from all your barns together. Meet Fortica MAX CEC, the ultimate egg flow management solution for your entire farm.

Operators can easily set a production goal and collection strategy, with all barns automatically synchronizing to maintain consistent egg output. If one barn's production drops, the other barns adjust their flow speed to compensate, keeping the centralized egg flow smooth and steady. This level of fully automated coordination reduces fluctuations, allowing your packing station to run at full capacity. Fortica MAX CEC saves labor costs, reduces egg breakage, and improves job satisfaction. It takes the complexity out of egg collection processing.

Let's calculate your profits

Thanks to more efficient packing, CEC saves you an estimated \$20 per employee per day in labor costs. Which could lead to nearly \$100,000 per year. Plus, you'll save thousands of eggs from breaking every week, along with benefits like improved employee satisfaction and retention.

Do the math yourself - chances are, you'll recoup your investment in Fortica MAX – CEC within months, with years of profit ahead.

Example: 18 barns - 1,000,000 layers		Your farm?
Working days	6 days a week 52 weeks	...
# employees (operators, packers, pallet crew)	16	...
Savings per employee per day	\$ 20	...
Savings in personnel costs per year	$6 \times 52 \times 16 \times 20 =$ \$ 99,840	...



Everything about Fortica MAX

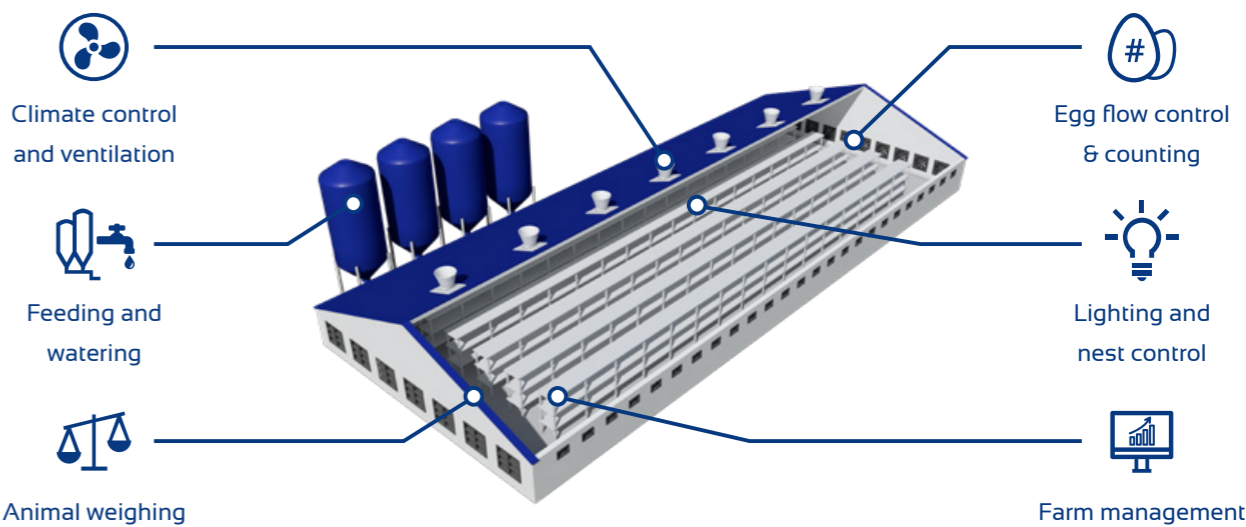
Premium controller for advanced farm management

All-in-one poultry automation system

Perfect egg flow control at both barn and farm levels is just one of the six key capabilities of Fortica MAX, Hotraco Agri's newest controller. Fortica MAX gives you real-time insights and total control over all poultry house processes, allowing you to optimize egg production and manage the daily routine of your laying hens.

With Fortica, you can control feed, water, lighting, nests, climate, weighing, and egg flow - all within a single control system. This helps you create the optimal living environment for your layers, resulting in healthier animals, better performance, reduced medication use, and ultimately, improved results and increased profits.

- ✓ Trusted software, powered by future proof technology
- ✓ Next-generation 12-inch touchscreen & optimized user interface
- ✓ Improved processor performance



Hotraco Agri

Part of Hotraco Group

Hotraco Agri

As a global leader in innovative control technology, Hotraco Agri develops, manufactures and supplies top-quality automation systems for the livestock sector. Our mission is to enhance poultry farmers' business performance through automation solutions that prioritize animal welfare and maximize yields.

Global network, local expertise

Based in the Netherlands, the Hotraco Development Center is situated within the world's smartest region – the Eindhoven, Leuven and Aachen circle. Our global presence is maintained through sales offices, dealers and installers, ensuring worldwide support.

Part of Hotraco Group

Hotraco Group comprises inventive, tech-focused companies specializing in system development and integration. Operating internationally with over 235 employees worldwide, our companies strive to optimize living, working, storing, growing conditions for people, animals and crops. Combining cross-sector knowledge and problem-solving abilities, we always seek and deliver the best possible solutions.



LIVESTOCK



CROP STORAGE



HORTICULTURE



Stationsstraat 142
5963 AC Hegelsom - Netherlands

Tel. +31 (0)77 327 50 50
info@hotraco-agri.com
www.hotraco-agri.com

